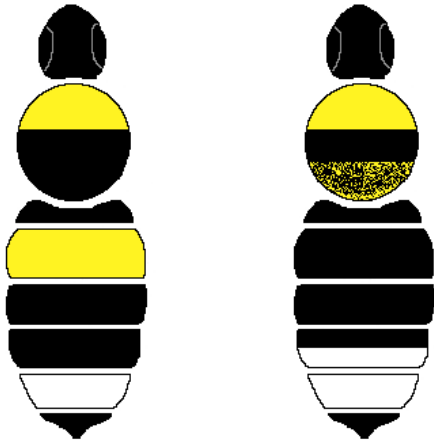


White Banded Bumble Bees

cryptarum

*occidentalis***



***Bombus occidentalis* is also known as the 'Western Bumble Bee'. Populations of this species have been declining and it has been listed as **THREATENED** federally and is considered **SENSITIVE** provincially.

Cleptoparasitic

Bumble Bees

Psithyrus insularis,

Psithyrus flavidus,

Psithyrus sucklei



Cleptoparasitic bumble bees invade the nests of other bumble bees and force the workers to rear their young. There are primarily 3 species of *Psithyrus* in southern Alberta. They all have a similar colour pattern but are easily identified as *Psithyrus* from other bumble bees by their shiny, curved and pointed abdomen.

How can you help?

- **Build a bumble bee house!**
- **Plant an assortment of flowers that bloom throughout the season.** This provides a constant food source for bumble bees that are active all season long
- **Avoid using insecticides.**
- **Avoid urban bee keeping.** non-native honey bees can compete for food with their wild counterparts
- **Become a citizen scientist** and report bumble bee sightings to: BumbleBeeWatch.org

Additional information:

- The genus name for Bumble Bees is *Bombus*.
- *Psithyrus* is a subgenus of *Bombus*, see back panel.
- 'V1' and 'V2' refer to different colour variants of the same species
- The first and sixth segment on the abdomen are very narrow and often difficult to see.
- Males can have entirely different coloration and always have an additional abdominal segment.
- Workers generally have very similar coloration but are smaller than Queens.
- Other colour variants may be found in the area.
- This is not a comprehensive list of bumble bees on Southern Alberta. Other colour variants and species may be found in the area. For more detailed descriptions, see Williams et al. *Bumble Bees of North America*, 2014.

Bumble Bees of Southern Alberta

An Identification Guide to Common Queens



Developed by the Alberta Native Bee Council 2018

info@albertanativebeecouncil.ca

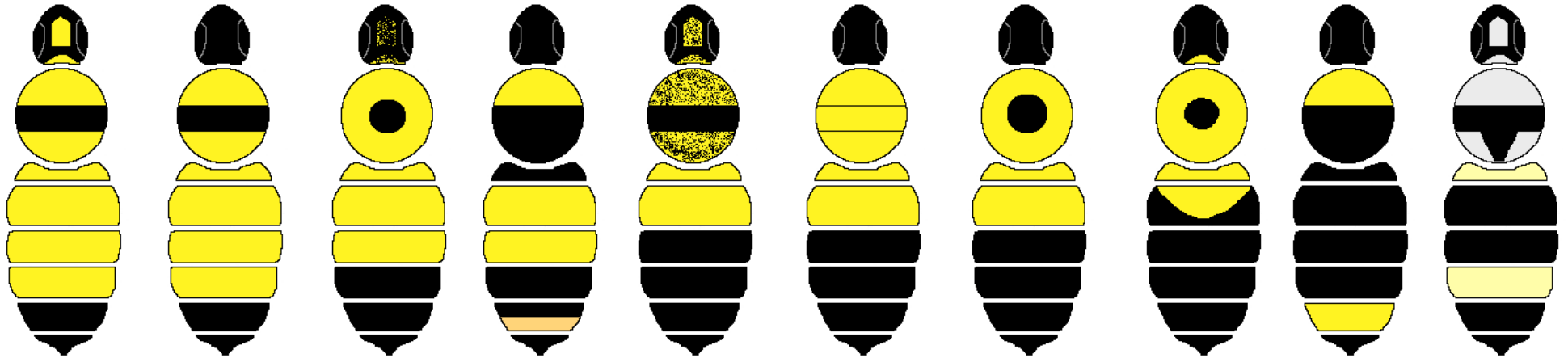
www.albertanativebeecouncil.ca



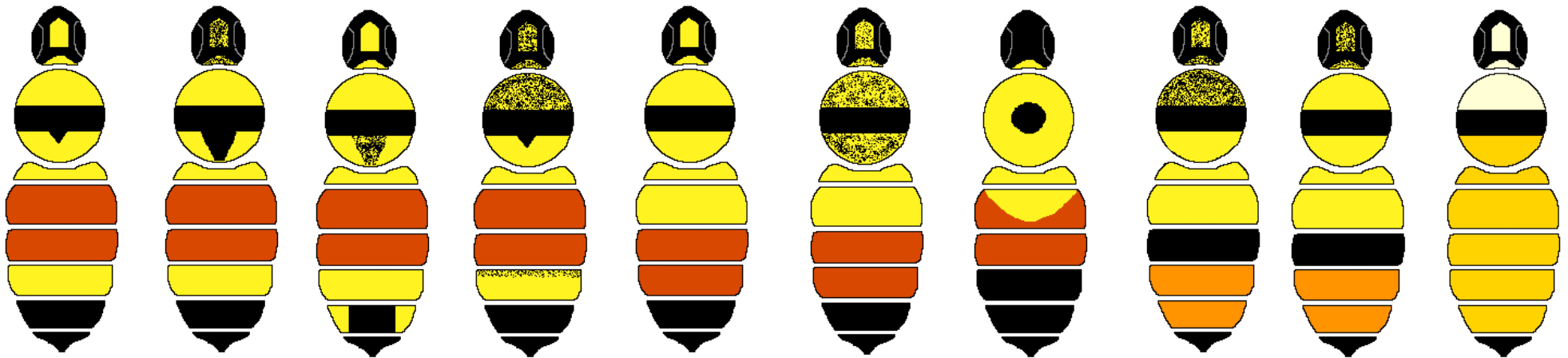
Follow us on Facebook

Yellow and Black Bumble Bees

*borealis** *fervidus* *nevadensis** *terricola* *flavifrons V1* *perplexus* *vagens* *rufocinctus V1* *fervidus V2** *bifarius**



huntii *ternarius* *sylvicola** *melanopygus* *centralis* *flavifrons V2* *rufocinctus V2* *mixtus* *frigidus* *appositus*



* species marked with an asterisk are easily identified