

## CENTRAL ALBERTA

Foothills  
Alpine  
Boreal  
Parkland  
Grassland



### A note on the Visual Guide:

- All bumble bees are in the genus *Bombus* (denoted by 'B.' in the Guide and followed by the species name).
- Cuckoo bees (*Bombus Psithyrus*) act as nest parasites of bumble bees and have a similar appearance.
- Some bumble bee species have multiple colour variants, denoted by V1 and V2 in the Guide.
- Workers (females) usually have similar coloration but are smaller than Queens.
- Males, which are similar in size to workers, often have different coloration and have one more abdominal and antennal segment than workers and Queens.

This is not a comprehensive list of bumble bees of Central Alberta. Other colour variants and species may be found.

2023

[albertanativebeecouncil.ca](http://albertanativebeecouncil.ca)

Funding for the development of this Guide was provided by



as part of the Weston Family Prairie Grasslands Initiative

### HOW CAN YOU HELP OUR BUMBLEBEES?

- Plant flowers (preferably native species) with large patches of individual species & a variety that will bloom throughout the season.
- Build a bumble bee house and report back annually through our Bumble Bee Box Monitoring Program.
- Avoid or minimize the use of pesticides.
- Be aware that keeping honey bees does not support native bee conservation and may even harm native bees.
- Take up 'bee watching' and report bumble bee sightings to [BumbleBeeWatch.org](http://BumbleBeeWatch.org) or iNaturalist.
- Support the Alberta Native Bee Council, the Alberta Native Plant Council or other non-profit organizations by becoming a member or purchasing merchandise!

### NATIVE BEES ARE IMPORTANT!

- The agricultural sector relies on wild pollinators to produce nutritional and economic benefits for people.
- Native bees are also a critical part of natural systems where they pollinate plants that are food and habitat for wildlife.



ALBERTA  
NATIVE BEE  
COUNCIL

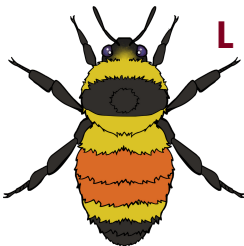


Visual Guide to the  
**BUMBLE BEES  
OF CENTRAL  
ALBERTA**

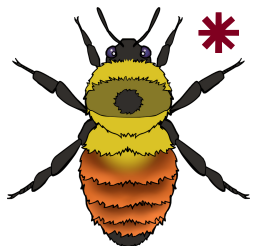
# BUMBLE BEES OF CENTRAL ALBERTA



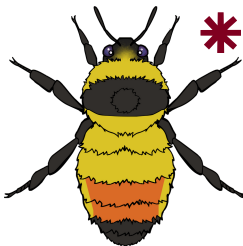
*B. ternarius*



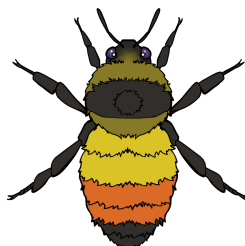
*B. huntii*



*B. rufocinctus V1*



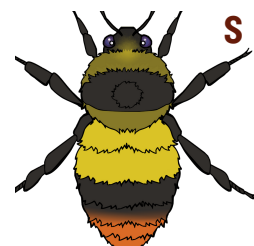
*B. centralis*



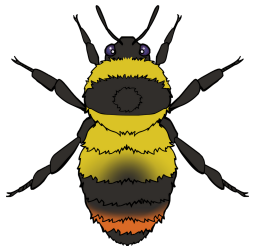
*B. flavifrons V1*



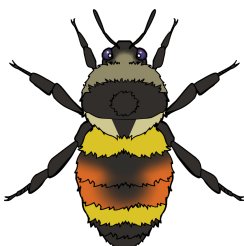
*B. melanopygus*



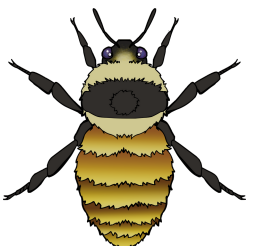
*B. mixtus V1*



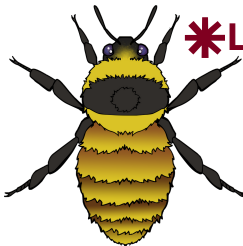
*B. frigidus*



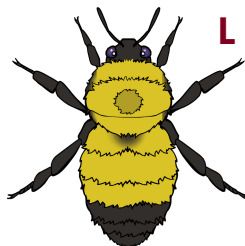
*B. vancouverensis V1*



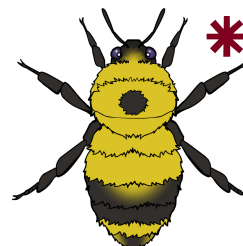
*B. appositus*



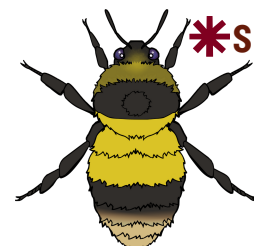
*B. borealis*



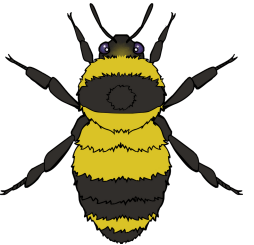
*B. nevadensis*



*B. rufocinctus V2*



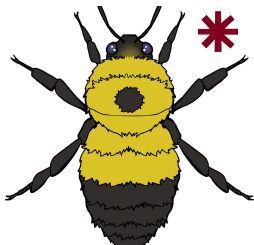
*B. mixtus V2*



*B. sandersoni*



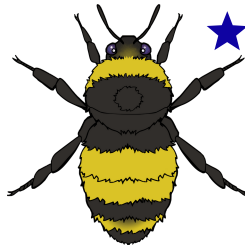
*B. perplexus*



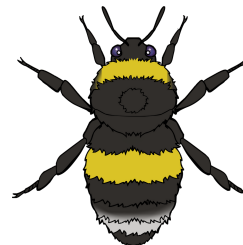
*B. vagans*



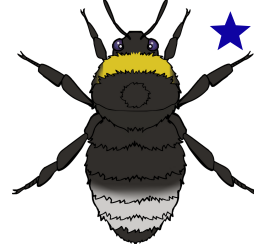
*B. flavifrons V2*



*B. terricola*

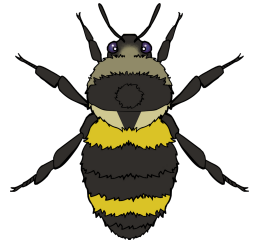


*B. cryptarum*

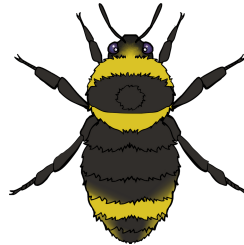


*B. occidentalis*

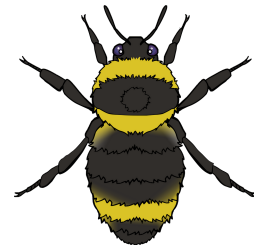
## CUCKOO BEES Subgenus Psithyrus



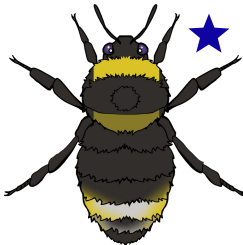
*B. vancouverensis V2*



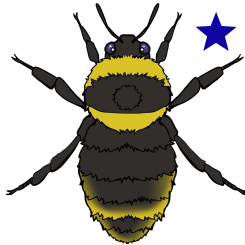
*B. insularis*



*B. flavidus*



*B. bohemicus*



*B. suckleyi*

### Legend

- S** Small Bodied
- L** Large Bodied
- \*** Common
- ★** At Risk

Scan here for more information:

